

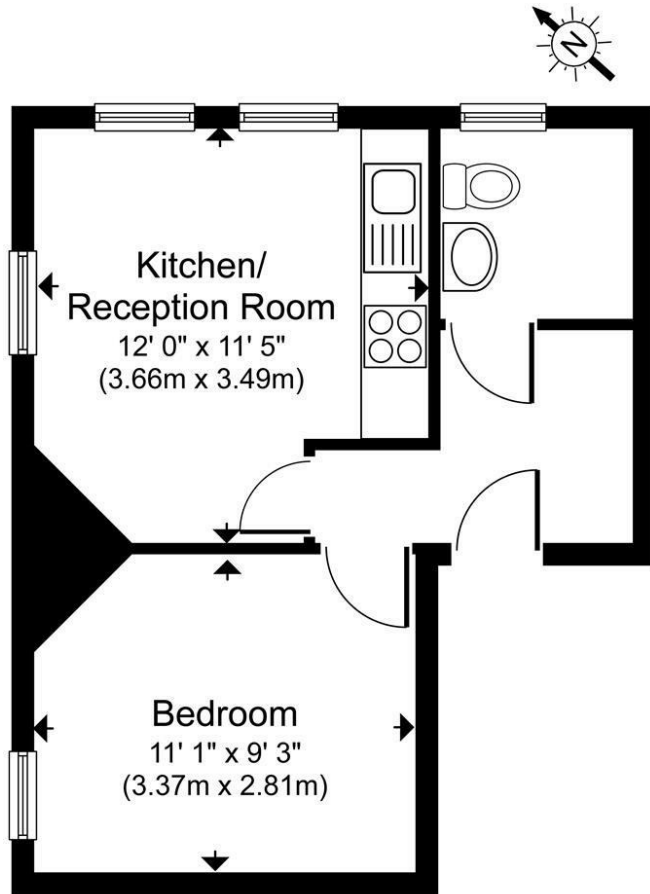
PER MONTH

**£935 Per Month**  
**Green Lanes**

London, N4 1AN



EPC RATING: COUNCIL TAX BAND:



**First Floor**

High Road, London, N4

Gross internal area 314 sq ft / 29 sq metres

Not to Scale. Produced by The Plan Portal 2017

For Illustrative Purposes Only.



| Energy Efficiency Rating                    |   | Current                 | Potential |
|---|---|-------------------------|-----------|
| Very energy efficient - lower running costs |   |                         |           |
| (92 plus)                                   | A |                         |           |
| (81-91)                                     | B |                         |           |
| (69-80)                                     | C |                         |           |
| (55-68)                                     | D |                         |           |
| (39-54)                                     | E |                         |           |
| (21-38)                                     | F |                         |           |
| (1-20)                                      | G |                         |           |
| Not energy efficient - higher running costs |   |                         |           |
| <b>England &amp; Wales</b>                  |   | EU Directive 2002/91/EC |           |



Agents Note: Whilst every care has been taken to prepare these particulars, they are for guidance purposes only. All measurements are approximate and are for general guidance purposes only and whilst every care has been taken to ensure their accuracy, they should not be relied upon and potential buyers/tenants are advised to recheck the measurements



**OFFICE ADDRESS**  
786-788 Green Lanes  
London  
N21 3RE

**OFFICE DETAILS**  
0208 800 1155  
management@paul-simon.co.uk